



February 2023

GENESEE VALLEY WOODCARVERS

Web site: <http://gvwoodcarvers.com/>

February 13 6:30 PM Regular Club Meeting

40 & 8 Club (across the street from Gleason Works)
933 University Avenue, Rochester, New York

Interim President's Note – February 2023

Greetings from Cuba! The show is a go for April 8th. We will be looking for volunteers at the February meeting. When we get back, we will send out a summary of volunteer positions and duties. Many hands make light work.

Floyd is still collecting prizes for our raffle and carvings are especially coveted.

Hasta luego,

Alison

From the Nominating Committee

Looking forward to the carving club meeting breaking up winter's shutdown? The meetings can only continue with a full slate of officers. Consider volunteering for the three minimal tasks connected with President or two tasks with Vice President. Contact Alison Currie, Robin Salsbury or Annita Breitweiser.

Alison alison.c.currie@gmail.com 585-342-7815
Robin robinsalsbury@outlook.com 585-766-0082
Annita abreitweiser75@gmail.com 585-374-5641

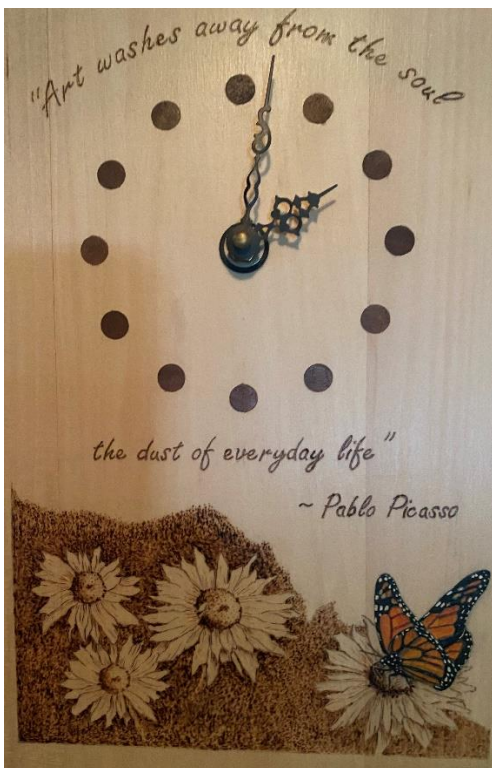
Show Special Category: Quilt Squares



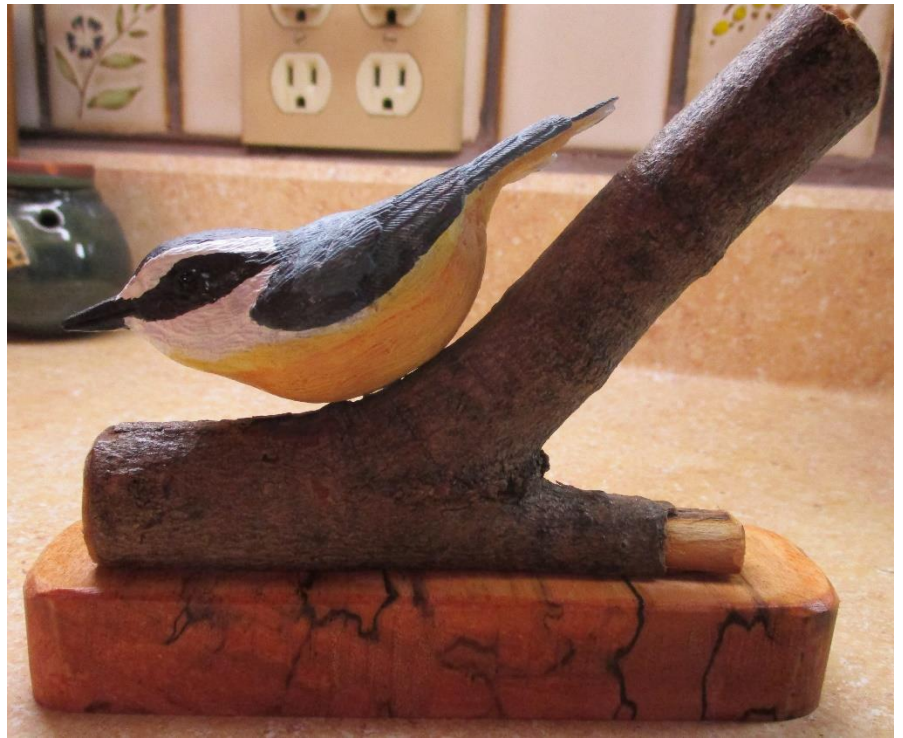
Pick up your quilt square to carve, wood burn or paint. Inspiration from Woodcarving Illustrated Fall 2022.

February 13 meeting

Dick Pierce will present on pyrography.



Gallery



Earl's Santa and Nuthatch

Showcase your carvings by sending them to Susie to include in the next newsletter.



Mardou shared this photo from the Punta Gorda Wood Show

Outreach



The Rush Library has a display of Earl's carvings. He included information about the club and how to connect with us.

Could you do a display at your library?

Send me a photo of your display and I will put it in the newsletter.

Additional Carving Get togethers

Bring your own carving projects. Share and carve.

Need more information: contact Bob Martin rjm578@aol.com

Greece group meets every Monday morning at 9:30 at the Greece Community Center.

The Chili woodcarving group meets every Wednesday morning 9:00 to 11:30 at the Chili Senior Center. Our room is on the 2nd floor just to your left as you exit the elevator.

If you are not a resident of Chili, you have to register at an annual fee of \$25.

If you are not a resident of Greece, the annual fee is \$35.

Carving outside at Sawyer Park is always free.

Women with Knives and Gouges

New Name Same Group of Great Women

February 16, 2023

Third Thursday of the month

Nettleton's in Victor

We are having a great time getting together. If you are interested in joining, contact Susie.
susie.nettleton@rochester.rr.com 585-734-0266

Chips from the Editor

Wow, it is February. The days are getting longer! The unfinished carving projects are still around. I am making some progress on painting the Bufflehead.

My challenge is Robin's Screech Owl. It is the biggest carving challenge I have tried. It sort of looks like an owl but has a very long way to go. I always need to take off more wood.

Think about becoming an officer to help the club. The jobs are less work than being the newsletter editor. 😊

The March newsletter deadline is: **February 27, 2023**

Happy carving,

Susie Nettleton, editor